

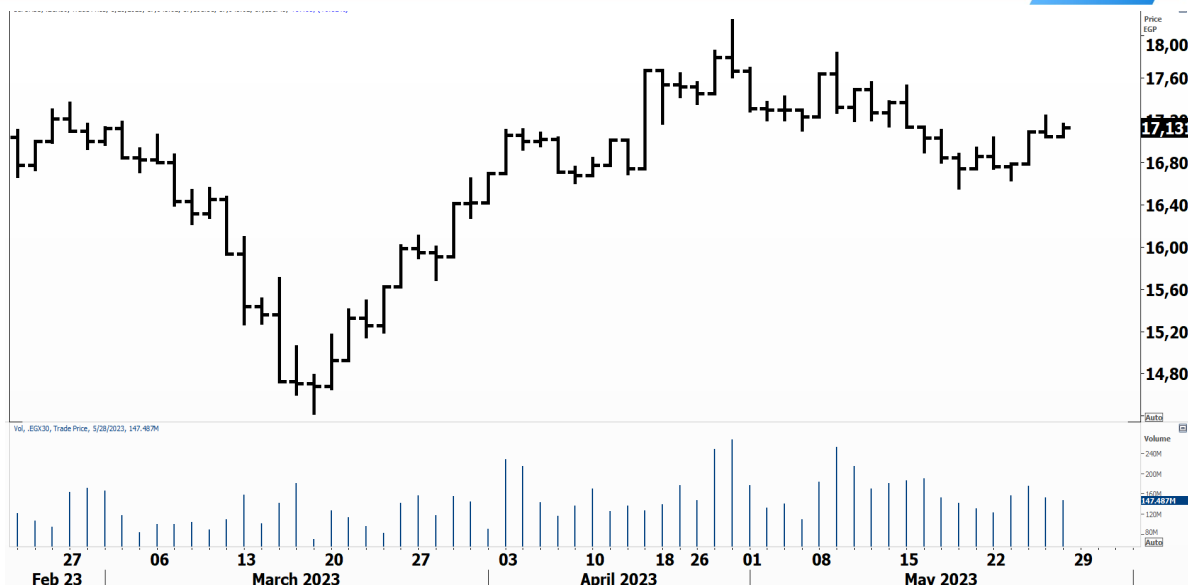


PIONEERSECURITIES

TECH TO THE POINT

29-May- 2023

This report must be read with the disclaimer
on the last page



Price EGP	Last	17,131.45
18,000	High Today	17,161.50
17,600	Low Today	17,043.62
17,131	Volume	M 147.487
16,800	First Support	16,600
16,400	Second Support	15,900
16,000	First Resistance	17,100*
15,600	Second Resistance	17,800
15,200	Stop Loss	16,600
14,800		
	HISTORICAL RETURN %	
	1 WEEK	1.60%
	1 MONTH	-3.74%
	1 QUARTER	-0.47%
	1 YEAR	67.95%
	YTD	17.35%

Analysis

The EGX 30 closed at 17,130 at the end of the session, and succeeded to end the day above 17,050-17,100. It is important to confirm this break today and to see the market rising above 17,100.

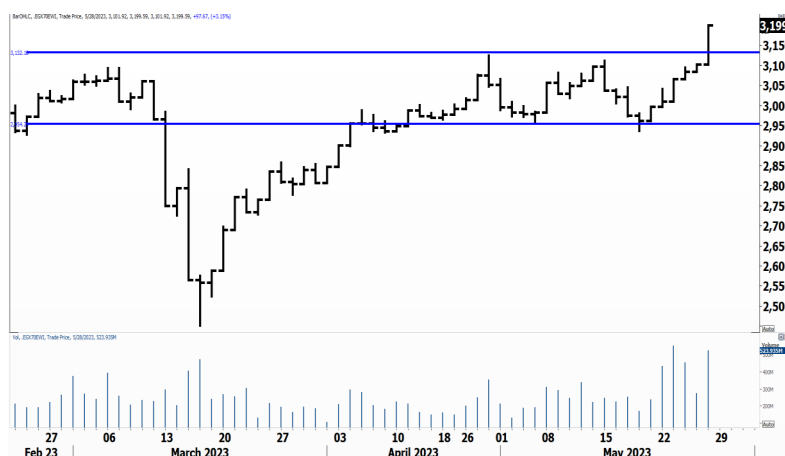
If we continue our rise today, we will probably be able to approach the peak and hit 17,800. Stops are still in the same place, below the nearest bottom that lies at 16,600.

EGX Small Caps Index/ EGX 70


Analysis


The EGX 70 broke its resistance to the upside and closed at 3,200. This breakout is significant especially that the index is hitting new highs.


Buying at this breakout is recommended and our stop will be placed below the low of the breakout day (at 3,100)




Resistance

MTIE  Closed at 7.12 after breaking 6.75 to the upside. Those who are out of the stock can step in here with a target at 8.5 and a stop below 7.1.

BTFH  The breakout above 4.5 is of major magnitude as it is a major peak that appears clearly on the monthly chart. This breakout can lead BTFH to 7 which is its current target.

EFID  Broke 17.9 to the upside and closed clearly above it. The stock is expected to approach its major peak that lies at 21.

AMIA  Witnessed a significant breakout above 2.4 to close at 2.51. If this breakout is confirmed, we will probably see a strong rise to come. Our current target lies around 3.3.


Support


No stocks broke their support yesterday

Testing

Support

Resistance

ADIB  The 24 level is a major resistance to watch. A break above this level will trigger an entry signal and new historical highs will be set. Buying at this breakout is recommended.

DSCW  If the stock breaks above 0.48 an entry signal will be triggered and our target will be set around 0.55. In case the stock declines from here, we expect the 0.46 level to serve as support.

ACAMD  Challenging its important resistance that lies at 0.65. We like the stock and are expecting it to witness a significant rise, especially if it breaks above 0.65. ACAMD is expected to reach 1.

Symbol	S. Description	Last	Buying Area 1	Buying Area 2	Selling Area 1	Selling Area 2	Selling Area 3	Stop Loss
--------	----------------	------	---------------	---------------	----------------	----------------	----------------	-----------

N.B. please note that the levels are too close as these trading opportunities only suit T+0 speculators

The prices that are accompanied by a green arrow in the above table show resistance levels. Thus, a break above these levels will pave the way to achieve one (or all) of the targets.

The area between buying area 1 and buying area 2 is a trading area.

Yesterday's T+0/T+1 Trades

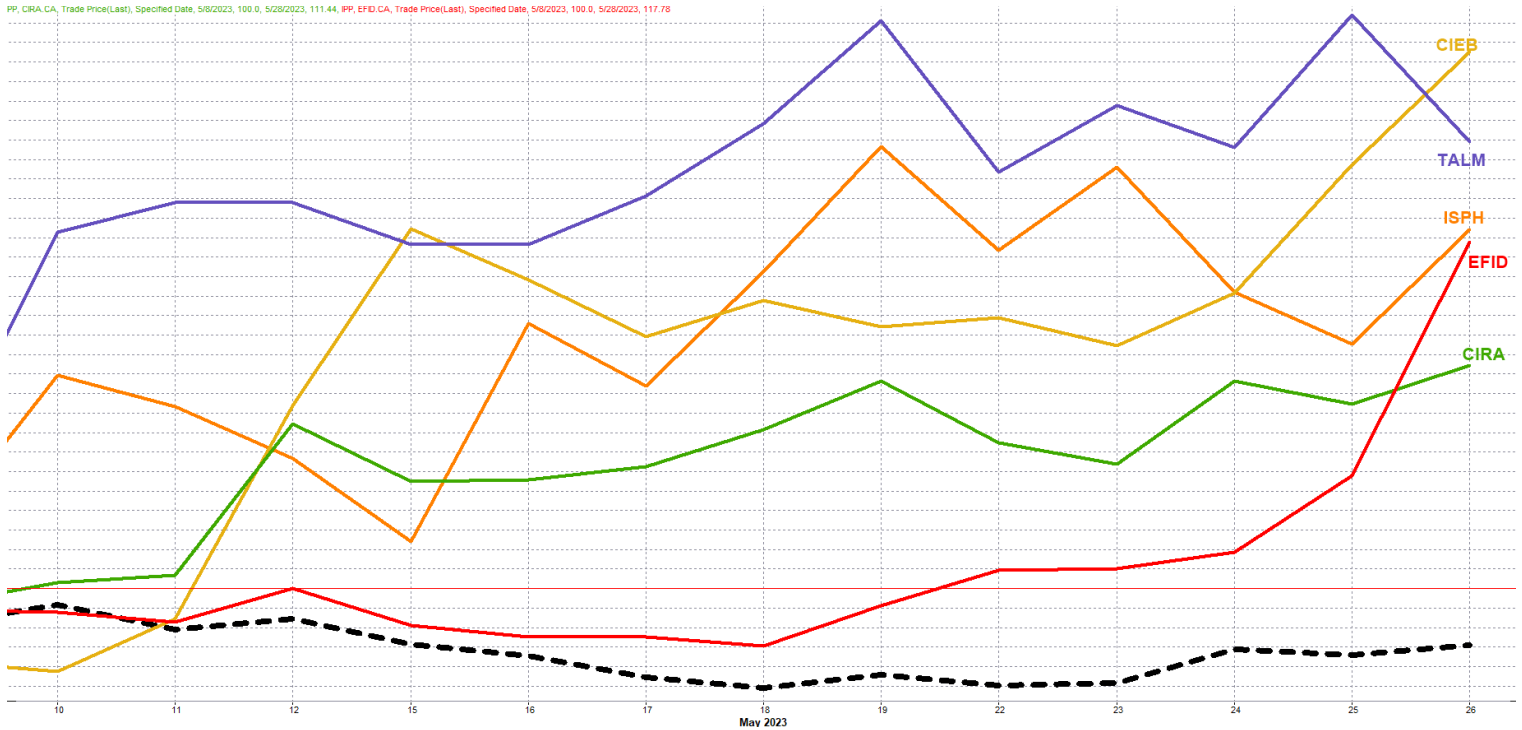


Symbol	Hit first Target	Hit Second Target	Hit Third Target	Hit Stop Loss	Triggered Buy	No Action

Top 5 Performers

EGX 30 Stocks; Past 2 Weeks

PP, CIRA.CA, Trade Price(Last), Specified Date, 5/8/2023, 100.0, 5/28/2023, 111.44, PPI, EFID.CA, Trade Price(Last), Specified Date, 5/8/2023, 100.0, 5/28/2023, 117.78



Symbol	S. Description	Last	Support 1	Support 2	Resistance 1	Resistance 2	Trend	Recommendation	Stop Loss/ Re-Entry
COMI.CA	COM INTL BK/d	52.03	50	47.3	53	55.25	↔	Hold	47.3
EFIH.CA	E-FINANCE FOR DIGITAL&FINANCIAL INVESTMENT	17.68	17	16.15	18.25	19.4	↔	Hold	17
EAST.CA	EASTERN CO/d	18	16.45	15.6	18*	18.8	↔	Hold	15.6
EKHO.CA	EGYPT KUWAIT H/d	1.029	\$0.98	\$0.957	\$1.05	\$1.09	↓	P.Sell	1.05
ABUK.CA	ABU QIR FERTILIZERS /d	47.13	46.5	44.5	53	55.5	↔	Hold	46.5
HRHO.CA	EFG HERMES HOL/d	18.56	18	17	19.5	20.65	↑	Hold	17
FWRY.CA	FAWRY FOR BANKING TECHNOLOGY /d	5.81	5.47	5.33	6.06	6.6	↔	Hold	5.47
MFPC.CA	MISR FERTILIZERS PRODUCTION CO	167.15	160	152	182	200	↑	Hold	160
TMGH.CA	TALAT MOSTAFA/d	8.76	8.5	8.2	9	9.5	↔	Hold	8.2
EKHOA.CA	EGYPT KUWAIT HOLDING CO	40	38	35.5	41.2	45	↔	Hold	38
SWDY.CA	ELSWEDY ELECTR/d	16.86	16	15.6	18.6	19.1	↑	Hold	15.6
ETEL.CA	TELECOM EGYPT/d	24.24	22.5	21.7	24*	25.5	↔	Hold	25.5
CIRA.CA	CAIRO FOR INVESTMENT AND REAL ESTATE	11.12	10.4	10	11.2	12	↔	Hold	10
MNHD.CA	NASR CITY HOUSE/d	3.15	3.15*	2.89	3.35	3.54	↔	Hold	2.89
AMOC.CA	ALEXANDRIA MINERAL OILS CO/d	8.25	8.2	7.2	9.02	9.97	↓	P.Sell	9.02
CIEB.CA	CREDIT AGRICOL/d	13.21	12.3	11.5	13.3	13.75	↑	Hold	11.5
EFID.CA	EDITA FOOD INDUSTRIES	18.48	17.8	17	19	20.25	↑	Hold	17
CLHO.CA	CLEOPATRA HOSPITAL	4.61	4.45	4.27	5	5.2	↔	Hold	4.45
SKPC.CA	SIDI KERIR PET/d	19.55	19.4	17.9	21.9	23.9	↔	Hold	19.4
ESRS.CA	EZZ STEEL/d	37.4	37.07	33.6	41	43	↔	Hold	37.07
JUFO.CA	JUHAYNA FOOD INDUSTRIES	12.37	12	11.8	13.6	13.85	↑	Hold	11.8
HELI.CA	HELIOPOLIS/d	8.68	8.46	8.06	9.28	10	↔	Hold	8.46
TALM.CA	TAALEEM MANAGEMENT SERVICES	3.97	3.8	3.65	4.34	4.6	↔	Hold	3.65
ADIB.CA	ABU DHABI ISLAMIC BANK EGYPT	23.9	22.25	21	24	27	↑	Hold	21
ORAS.CA	ORASCOM CONSTRUCTION	107.11	98	95	107	114	↑	Hold	95
CCAP.CA	CITADEL CAPITA/d	2.2	2.07	1.96	2.34	2.47	↔	Hold	2.34
RMDA.CA	TENTH OF RAMADAN FOR PHARMACEUTICAL	2.32	2.25	2.1	2.43	2.54	↔	Hold	2.1
PHDC.CA	PALM HILL DEV /d	1.9	1.83	1.75	2.03	2.13	↔	Hold	2.13
ORWE.CA	ORIENTAL WEAVERS /d	15.37	14.4	13.5	16.5	17.7	↔	P.Buy	14.4
ISPH.CA	IBNSINA PHARMA/d	2.22	2.06	1.9	2.4	2.6	↑	Hold	2
AUTO.CA	AUTO GHABBOUR /d	5.61	5.3	5.16	5.7	6	↔	Hold	5.16

Guidelines



Bullish



Bearish



Neutral

Trend: (Upgrade, Downgrade): Change in trend color refers to upgrade or downgrade in the trend relative to the previous trend direction. E.g. change from “↓Down” to “↔ Flat” is considered an upgrade and vice versa.

Buy: Buy the full position.

P.Buy: Buy portion of a position

Hold: Don't Buy or sell.

P.SELL: Sell portion of a position.

Sell: Sell the full position.

Stop Loss: Completely exit the position (or) Re-entry in cases of Selling.

Disclaimer

This report has been prepared according to the general data available for public, in accordance with the professional standards applied in that career to the best knowledge of the reporter. The recommendations mentioned are a guiding tool representing a professional opinion, and not granting any profits, consequently it is not obligatory for our valued customers and investors. Pioneers Securities©, Egypt shall not be liable for any direct, indirect, incidental, or consequential damages, including limitation losses, lost revenues, or lost profits that may result from these materials. Republishing this report or any of its contents is subject to prior approval; referring to the source is a must. Opinions expressed are subject to change without notice and may differ or be contrary to the opinions or recommendations of Pioneers Securities©, Egypt Research or the opinions expressed by other business areas or groups of Pioneers Securities©, Egypt as a result of depending solely on the historical technical behavior (price and volume).

Technical Analysis Department

Saleh Nasser

Chief Technical Strategist

Ahmed Hassan

Senior Technical Analyst

Dina Fahmy

Senior Technical Analyst

Tips on reading the report

The first page includes an analysis of two major indices in the Egyptian Stock Market; the norm is that we will analyze both the EGX 30 and 70, but sometimes we will compare the EGX 30 to its 50 counterpart if there is important information in this comparison. We also use the Hermes Last Index interchangeably with the EGX 30. The .HRMSL index has an important edge; it uses last prices instead of VWAP. First thing our clients should do is to read the indices analysis carefully to have a clear understanding on our overall view.

The second page includes stocks that broke out beyond their resistance levels, and those that violated their support levels. It also includes stocks that are testing their support levels and those that are testing their resistance. This analysis is important and it is the core of our recommendations. It is important to note though that not all stocks that are testing their support levels are bullish, and not all that are testing their resistance levels are bearish. To make it easier for our clients, we have placed a bull face 🐮 if we consider the stock under study bullish, and a bear face 🐻 if we consider it bearish. We also added a big bullet 📌 if we are neutral.

It is important to note that you might find a stock that we consider bullish in our analysis (in the breakouts/testing section) but it remains as a hold or partial sell in the table. The conflict here is that the table is more conservative. This will not be an issue with our clients, because our analysis will explain why we are being bullish/bearish on the stock.